



2 ROWS AUTOMATIC GARLIC PLANTER FOR MINI TRACTORS

number of rows	2
Power demand	10 HP
category of 3 point hitch	3
working width	45 cm
depth of planting	Adjustable every 20 mm to max 160 mm
dimensions (length x width x height)	1600 / 920 / 1100 mm
weight	100 kg
distance between rows	Adjustable from 150 mm to max 450 mm - smooth regulation
seed spacing	Various spaces selection from 65 mm up to 200 mm
Working Capacity	0.1 ha / hour
suitable for planting	garlic, onions, saffron, broad beans, beans, potatoes
number of seats	1



AVAILABLE ACCESSORIES:

NAME	DESCRIPTION	PHOTO
chain with cups for automatic garlic planters (diameter of cups 25 mm)		
chain with cups for automatic garlic planters (diameter of cups 30 mm)	By default mounted on planter	

chain with cups for
automatic garlic
planters (diameter of
cups 36 mm)

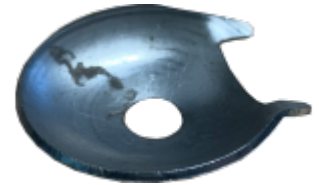


section division



chain with cups for
automatic garlic
planters (diameter of
cups 50 mm)

Used for saffron (*crocus sativus*)



chain with cups for
automatic garlic
planters (diameter of
cups 15 mm)

